



Improved mounting options for added versatility

The latest in Furukawa's small series breaker lineup, the **Fxa Series**, features improvements to three internal components – the piston, cylinder liner and seal retainer. As a result of these changes, the Fxa Series is harder-hitting and increases performance.

The improved piston has a longer stroke length and an increased diameter. The faster speed of the larger piston combined with an increased stroke means greater energy. The modified cylinder liner accommodates the larger piston and decreases the build up of internal heat, while the redesigned seal retainer compensates for higher back-head pressure. As a result, the Fxa breakers offer a large range of carrier mounts.

Select components are interchangeable, allowing you to utilize the same working steel, seal kit and front bushing.



Due to a small footprint, these breakers are ideal for use in tight work environments, sidewalk, driveway removal or any other demolition task. The Fx15a, Fx25a and Fx35a may be used on mini-excavators, compact utility loaders and skid steer loaders. Mounting options are numerous and can accommodate any carrier or combination of carriers or specific application.

Fx15a/25a/35a

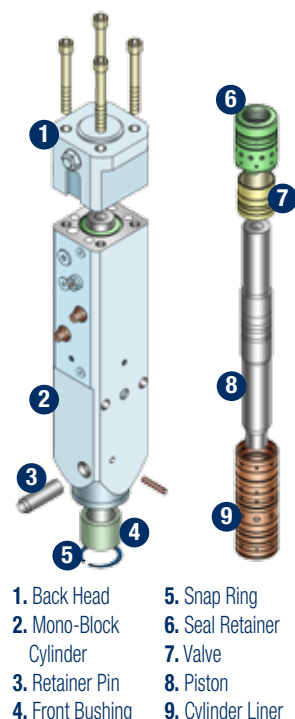
Features and Benefits:

- › Mono-block design with only two moving parts reduces maintenance
- › No through-bolts to maintain or diaphragm to replace
- › Field replaceable front wear bushing keeps tools at peak performance
- › Wide oil flow range for fast, hard-hitting performance and more carrier options
- › A variety of mounting options that can accommodate any carrier or application

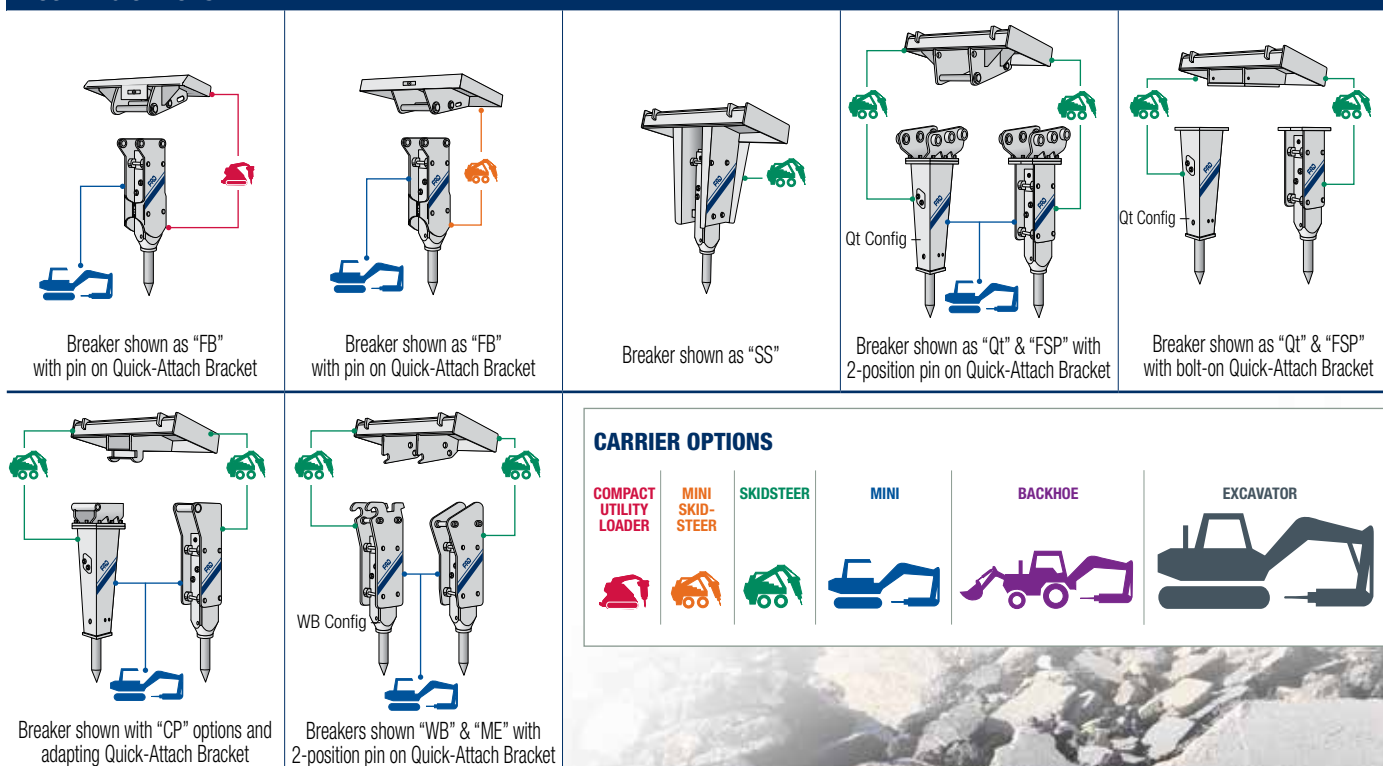


| IMPACT ENERGY CLASS | Fx15a - 150 ft lb | Fx25a - 275 ft lb | Fx35a - 375 ft lb |
|---|---|---|--|
| Weight in lbs. (kg)* | | | |
| FB configuration | 130 (59) | 181.5 (82.33) | 320 (150) |
| SS configuration | n/a | n/a | 549 (247) |
| FSP configuration** | n/a | n/a | 460 (209) |
| Qt configuration** | n/a | n/a | 470 (213) |
| Length in inches (mm)* | | | |
| FB configuration | 36.63 (930) | 43.5 (1106) | 53.33 (1354.5) |
| SS configuration | n/a | n/a | 51 (1295) |
| FSP configuration** | n/a | n/a | 50 (1270) |
| Qt configuration** | n/a | n/a | 48.5 (1232) |
| Working Steel*** | | | |
| Diameter in inches (mm) | 1.42 (36) | 1.77 (45) | 2.05 (52) |
| Replaceable length measured from fronthead in inches (mm) | 7 (175) | 8.5 (215) | 9 (225) |
| General Specifications | | | |
| Blows per minute (variable) | 600 ~ 1500 | 600 ~ 1500 | 600 ~ 1300 |
| Oil flow range gpm (lpm) | 2.6 ~ 7.4 (10 ~ 28) | 4.75 ~ 9.25 (18 ~ 35) | 6.0 ~ 13.75 (24 ~ 52) |
| Operating pressure psi (MPa) | 1450 ~ 2030 (10 ~ 14) | 1450 ~ 2030 (10 ~ 14) | 1740 ~ 2320 (12 ~ 16) |
| Qt configuration; 85 dB(A) @ | n/a | n/a | 7.5m |
| Recommended carrier range in U.S. tons | 0.55 ~ 1.65 | 1.1 ~ 2.75 | 1.65 ~ 4.41 |
| Carrier options |  |  |  |

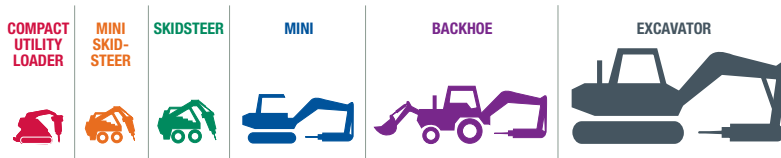
Notes * Weights and lengths for all configurations include standard Working Steel (less mounting & Hose Whips)
 ** Weights and lengths for FSP's & Qt's include a Universal Top Cap (less mounting & Hose Whips)
 *** All working steels are interchangeable with the previous F-Series and Fx-Series



MOUNTING OPTIONS



CARRIER OPTIONS



www.frdusa.com

CORPORATE HEADQUARTERS
 711 Lake Street Kent, OH 44240
 Ph: 330-673-5826
 Fax: 330-677-1616
 Toll Free: 1-800-527-2282

SOUTHEAST SALES AND SERVICE FACILITY
 155 Dexter Road
 Spartanburg, SC 29303
 Ph: 864-541-0125