

HIAB **ST** 173-063 Capacity 17 tm



Product brochure



HIAB 173-063

ST



Low **weight** and long **life**



HIAB ST 173-063 – a long life hoisting crane

The HIAB ST 173-063 is the perfect choice for hoisting applications. Thanks to the ingenious design this crane provides supreme capacity for a two-axle truck – the crane capacity is 17 tonne metre and the hoist handles up to 6.3 tonnes. Great attention has been paid to the hoisting mechanism which is fitted with a powerful gear box providing high hoisting speed at low noise levels. The large drum size makes it possible to use a long wire. The standard two pulleys on the boom tip and three on the hoist provides you with a very versatile crane. Lighter loads are lifted rapidly using single line pull, but you can quickly change to four line pull for lifting heavy loads. The outreach of this low-built and compact crane is close to 10 metres.

Features and benefits of the HIAB ST 173-063

The ST-family has been designed to offer customers on Asian markets powerful hoisting cranes with long lifetimes, easy to service and maintain and with high quality built-in features. We use our renowned boom design, laser cutting, high quality steel and hexagonal boom profile with only one weld to ensure our customers a high payload. You can benefit from a boom system that is tight, powerful and durable, has compact dimensions and is low weight.



➤ **Load-holding valve**

The load-holding valve will keep holding the load even in the event of hose leakage.

➤ **Continuous worm gear slewing**

The worm gear enables continuous slewing which means it is not necessary to turn in the opposite direction. The mechanism is extremely reliable, thus keeping maintenance costs at a minimum. The slewing house and base of the crane take up very little space, thereby leaving more room for the load.

➤ **T-boom system**

The T-boom system is a telescopic stiff boom system. Boom extensions are extended or retracted using internally mounted cylinders (telescopic boom). The crane is easily parked.

➤ **Protected hydraulics**

Running hydraulic hoses inside the boom structure greatly reduces the risk of damaging them. This keeps maintenance costs down and increases productivity. The highly wear-resistant hoses, which are protected inside the unit, have an impressively long service life and are very easy to maintain.

➤ **Hexagonal boom profile**

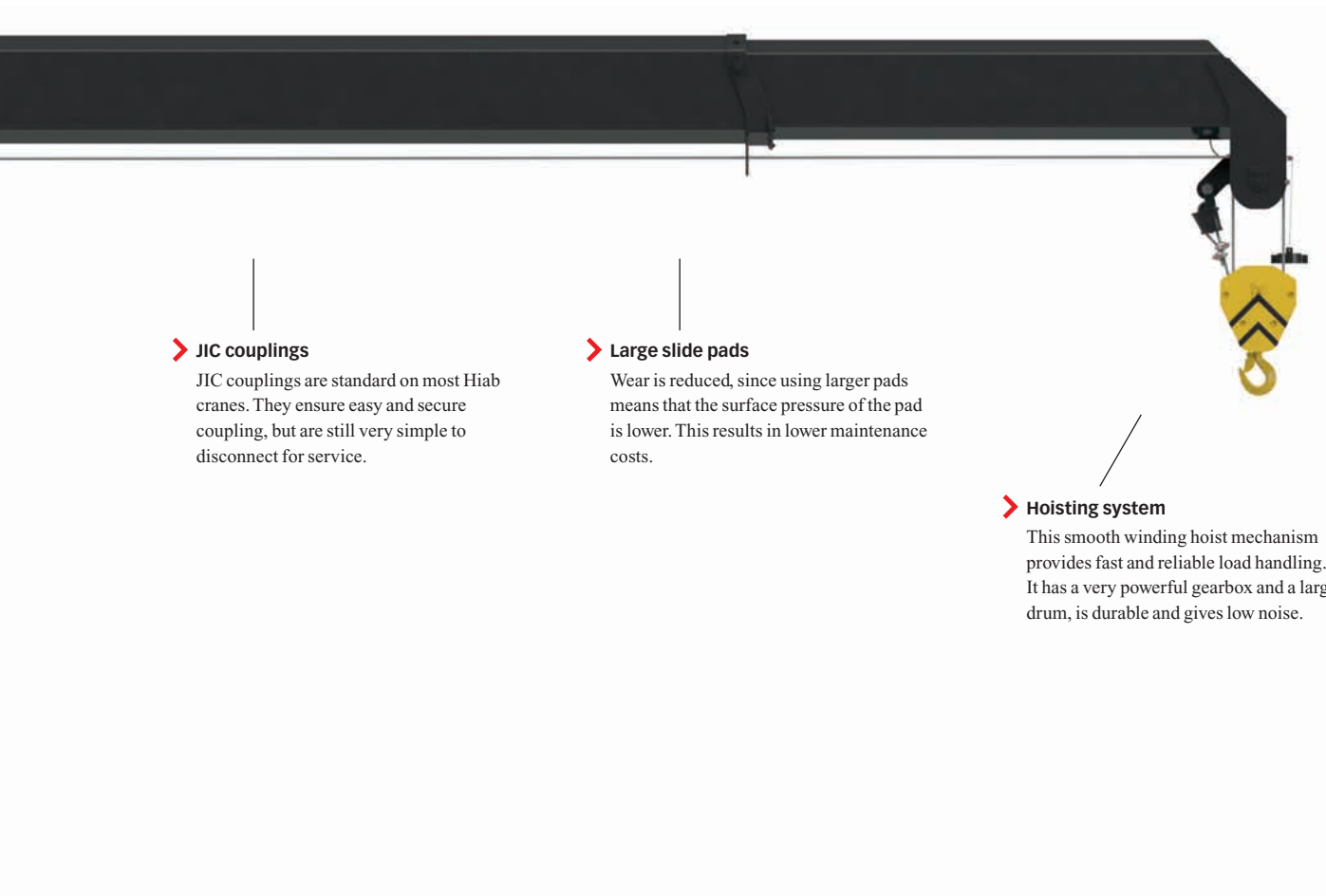
The hexagonal profile ensures the boom is always in perfect balance, thanks to its shape and large support surface. The profile also minimizes boom deflection. This reduces maintenance costs and increases efficiency.

➤ **Side supports for stability**

Side supports, fitted on each boom extension, stabilize the boom laterally and minimize play.

➤ **Variable line pull**

Variable line pull means you get a very versatile crane. Lighter loads can be lifted rapidly using single line pull, but you can quickly change to using up to four line pull to lift heavy loads. Two pulleys at the boom tip and three on the hook – four line pull – is standard.



➤ **JIC couplings**

JIC couplings are standard on most Hiab cranes. They ensure easy and secure coupling, but are still very simple to disconnect for service.

➤ **Large slide pads**

Wear is reduced, since using larger pads means that the surface pressure of the pad is lower. This results in lower maintenance costs.

➤ **Hoisting system**

This smooth winding hoist mechanism provides fast and reliable load handling. It has a very powerful gearbox and a large drum, is durable and gives low noise.

HIAB **ST** 173-063 Capacity 17 tm

> Controlling

ST-cranes are manually controlled with levers positioned at the crane base, side controls. In addition, the user-friendly cross controls make you free to choose which side of the truck you want to work from. The lever sequence is the same on either side of the truck. This makes the crane both easy to work with and versatile – an ideal partner for tough jobs.

> Hoisting system

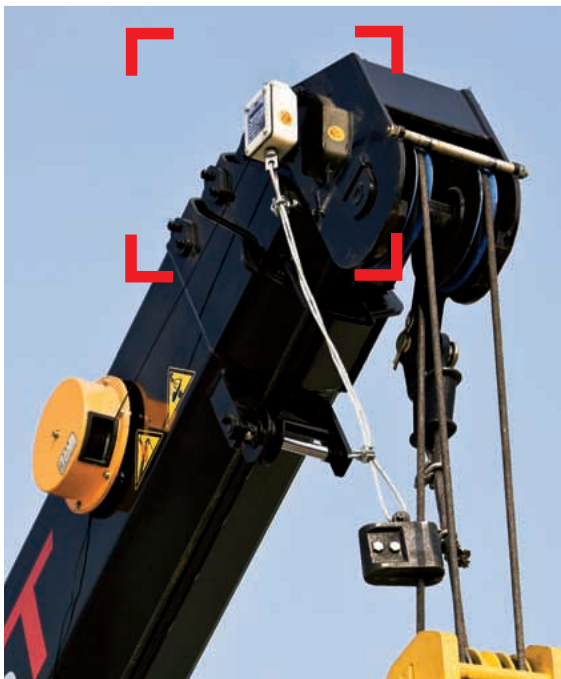
You can spend less time loading and unloading since this hoisting system is strong and/or fast. This allows you to increase the amount of work performed or the number of sites visited per day. The low noise level improves working conditions. Being partly built in also means that the hoisting system is protected both from being struck by the load and other objects. The large drum size makes it possible to use a long wire. The innovative design also makes servicing easy and fast to perform.

> T-boom system

A telescoping T-boom system is excellent for hoisting cranes. It is a long life solution requiring little maintenance. Due to the optimized cross sectional shape of the boom, the durability is high and maintenance costs are kept to a minimum. This is a cost-effective solution providing fast load cycle speeds.

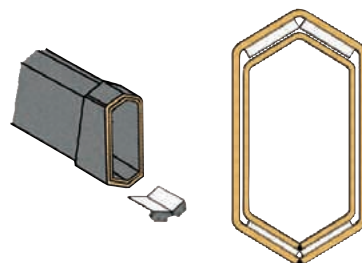
> ST provides powerful hoisting cranes with long lifetime

We began developing the ST-crane system with a single purpose: to provide you with a powerful hoisting crane with a long lifetime, easy to service and maintain and with high quality built-in features. Hiab is renowned for ingenious boom design. We use laser cutting, high quality steel and a hexagonal boom profile with only one weld to ensure our customers a high payload. Benefit from a boom system that is tight, powerful and durable, has compact dimensions and is low weight.



< Over-winding alarm

Operators will be warned by the truck horn if the winding limit is reached and can then take fast action to prevent damage caused by over-winding. This is a reliable technique to prevent over-winding.



< Hexagonal boom profile

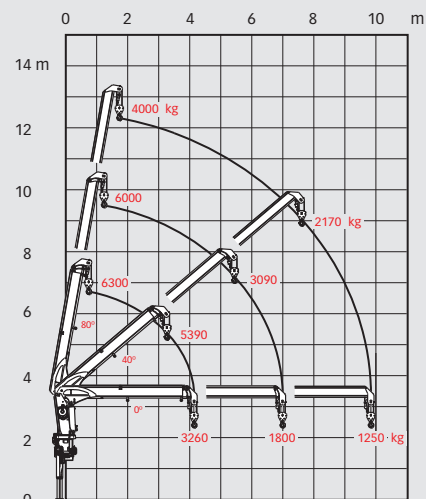
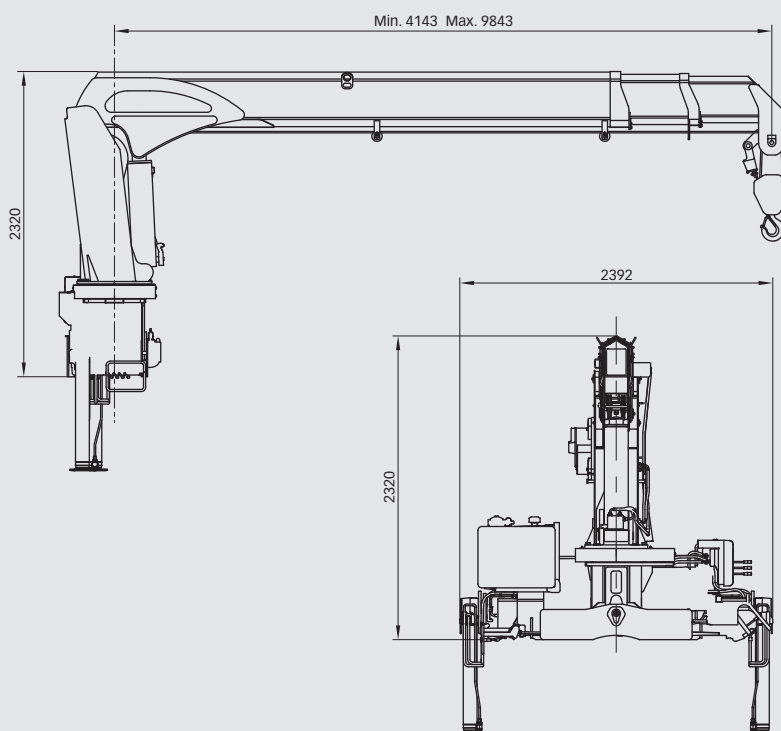
The hexagonal profile used on Hiab booms is a ground-breaking design introduced by Hiab many years ago. It is now standard throughout the market for loader cranes. Even the smallest Hiab crane benefits from this design.

Technical data

173-063

Max. lifting capacity (kNm)	167
Horizontal outreach - hydraulic extensions (m)	9.9
Max lifting capacity on hook load (kg)	6300
Winch lifting speed, 4 line pull at 4th layer (m/min)	13
Extension speed (m / s)	5.7 / 22
Boom angle / Outreach / Lifting capacity, 1st boom (m / kg)	0° / 4.2 / 3260
	40° / 3.1 / 5390
	80° / 0.5 / 6300
Boom angle / Outreach / Lifting capacity, 2nd boom (m / kg)	0° / 7.0 / 1800
	40° / 5.3 / 3090
	80° / 1.0 / 6000
Boom angle / Outreach / Lifting capacity, 3rd boom (m / kg)	0° / 9.9 / 1250
	40° / 7.5 / 2170
	80° / 1.5 / 4000
Slewing angle	∞
Installation space needed (mm)	772
Weight - "standard" crane with stabilizers (kg)	2200

HIAB ST 173-063



Disclaimer

Hiab cranes have been built to meet the highest standards of safety and service life and have been thoroughly tested. Strength calculations for this model have been carried out in accordance with EN13001. Hiab's certified Quality Assurance System complies with the ISO 9001. Some of the items in our literature may be extra equipment. Certain applications may require an official permit. We reserve the right to change technical specifications without prior notice. Hiab cranes produced for EU-countries are CE-marked and comply with the European Standard EN 12999.



Hiab is part of Cargotec Corporation

